

SkinClinic

INDEX

VOLUMI-LOOK STUDY

1. INTRODUCTION TO THE STUDY	2
2. PRODUCT PRESENTATION	2
3. OBJECTIVES OF THE STUDY	3
4. INFORMATION AND ACCEPTANCE OF VOLUNTEERS	3
5. MATERIAL AND METHODS USED	3
6. INCLUSION AND EXCLUSION CRITERIA	3
7. STUDY MONITORING INSTRUCTIONS	4
8. EFFICIENCY RESULTS	4
9. TOLERANCE RESULTS	6
10. SUMMARY	6



SkinClinic

VOLUMI-LOOK STUDY

1. INTRODUCTION TO THE STUDY

This report presents the results of the VOLUMI-LOOK product testing.

A sample of 30 people was established and invited to take part in the study for two months:

- Test date: started on 9th of November 2023.
- Sample: the final sample consisted of 30 participants, who had previously completed a questionnaire that allowed us to find out about their history and daily beauty routine, thus assessing their inclusion as suitable participants for the study.

2. PRODUCT PRESENTATION

The product of the Volumi-Look studio, eyebrow and eyelash conditioning serum, has the following main indications:

- Improve the anchorage of eyebrow and eyelash hair.
- Increase hair density.
- Improve the appearance and quality of eyebrows and eyelashes.
- Increase the length of the hair.

It is the perfect complement to be used daily as a cosmetic care for eyebrows and eyelashes to maintain their integrity and quality, obtaining longer eyebrows and eyelashes, with more body, greater volume, better appearance and quality.

Its cosmetic action is based on a formula that combines:

▪ VITAMINS:

The extra supply of biotin and panthenol helps to further moisturise and strengthen the hair fibre structures themselves.

▪ BIOMIMETIC PEPTIDES:

Widelash™, Sympeptide® X-Lash and Capixyl™ are peptides that, through different mechanisms of action, will normalise hair cycles, strengthen hair growth, stimulate keratin synthesis, improve hair anchorage and restore internal balance.

▪ HYDRATION:

Moisturising agents and its medium molecular weight hyaluronic acid content promote water retention and contribute to the overall good condition of the fibre both internally and externally.

3. OBJECTIVES OF THE STUDY.

The aim of the study is to assess the efficacy and tolerance of the VOLUMI-LOOK cosmetic product.

Efficacy will be assessed by measuring the thickness and length of eyebrow and eyelash hair and evaluating the quality and density.

In addition, the tolerance of the cosmetic has been tested with an Ophthalmological Test.

4. INFORMATION AND ACCEPTANCE OF VOLUNTEERS.

This test was carried out at the Centro Experimental de Carmado, S.L. following the general conditions of Carmado, S.L.

All participants were informed of the purpose and nature of the study and gave their written consent.



SkinClinic

5. MATERIAL AND METHODS USED

The type of study chosen was open-ended as all participants were familiar with the product and its functions.

A sample of 30 participants was selected from 30 female volunteers aged 35-65 years. Each panellist read, understood and signed the acceptance form and was trained as a study participant. The evaluation of the study began with the collection of a short completed questionnaire on the participant's medical history.

The following **non-invasive methods** were used during the study:

Instrumental evaluation with the Visia System® with triple illumination that allows us to assess the density and volume of the eyebrows.

Measurements were taken at the beginning of the study and on a weekly basis, which allowed not only to analyse the above-mentioned parameters but also to monitor the tolerance of the cosmetic in the group of panellists.

Other characteristics of the study were assessed with a final subjective evaluation questionnaire of the cosmetic product tested.

6. INCLUSION AND EXCLUSION CRITERIA

The inclusion criteria selected for participation in the study were as follows:

- Sex: Female.
- Age: 35-65 years.
- No treatment has been carried out in the area during the last 6 months.
- Regular users of cosmetics able to adhere to the study.

The exclusion criteria were:

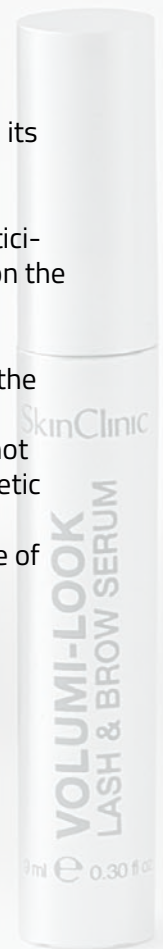
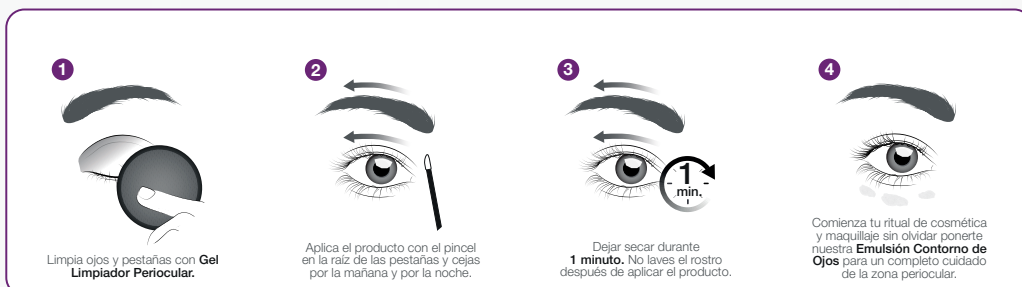
- Being under treatment or receiving any medication that may interfere with the study.
- Women with dermatological conditions of interest or dermopathies.
- Women with a history of hypersensitivity and adverse reactions to cosmetics.
- Having undergone cosmetic and/or filler treatment in the area.
- Participating in another study.

After establishing the inclusion and exclusion criteria, a final sample of 30 participants was chosen.

7. STUDY MONITORING INSTRUCTIONS

A set of instructions was given to be followed during the study:

1. Clean eyebrows and eyelashes.
2. Apply the product on the roots twice a day.
3. Do not use any other cosmetic product on the area.



SkinClinic

8. EFFICACY RESULTS OF THE STUDY 0.



"Eyelashes with more volume and density in 30 days".



"Longer eyelashes in 30 days".



9. TOLERANCE RESULTS

The product has shown 100% tolerance.

10. SUMMARY

- Within 20 days of application there is already a noticeable improvement in the quality and appearance of the hair.
- Eyelashes increase in volume and length after 30 days.
- The product is effective.